

protect your values



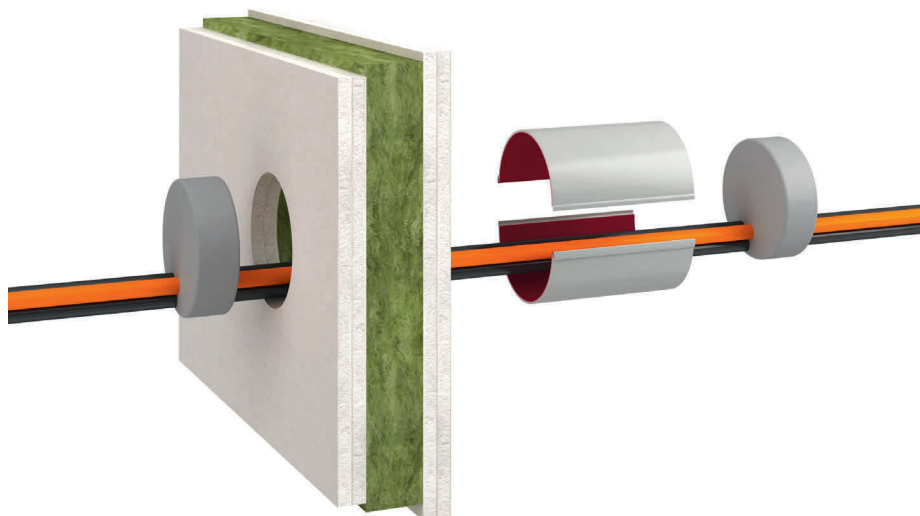
Fire protection with a ,click‘

PYRO-SAFE CT Approved to EN standards



A perfect solution

PYRO-SAFE CT, the simple penetration sealing system with a 'click' for existing cable conduit transits and new installations.



The two half-shells can be easily fitted around existing cables or cable conduits and securely connected by means of the click lock. The two plugs are matched accordingly to the cables and/or conduits and are inserted into the cable tube.

Applications

Fire stop system for sealing cable penetrations in plasterboard walls, solid walls and floors.

Characteristics

Fire resistant, foams up and seals off the room in the event of fire. An outstanding feature is the simple installation.

Fire rating

PYRO-SAFE CT complies with classification EI 30 to EI 120 according to DIN-EN 13501-2 depending on the fire protection seal width, the cables and/or cable conduits to be fed through, and the fire-resistance class of the structural elements to be sealed off

Applicability certificate

ETA-13/0821 European Technical Approval (ETA) of the Deutsches Institut für Bautechnik , Berlin.

Permissible occupation

Depending on design, electrical cables and conductors (excluding so-called waveguide cables) and fibre-optic cables of diameter ≤ 80 mm, cable looms of diameter ≤ 107 mm with individual cables of diameter ≤ 21 mm and cable conduits of diameter ≤ 32 mm with and without cables and PVC-U conduits (U/U) with diameter ≤ 32 mm.
100% of the tube cross section can be used.

Particular points to note

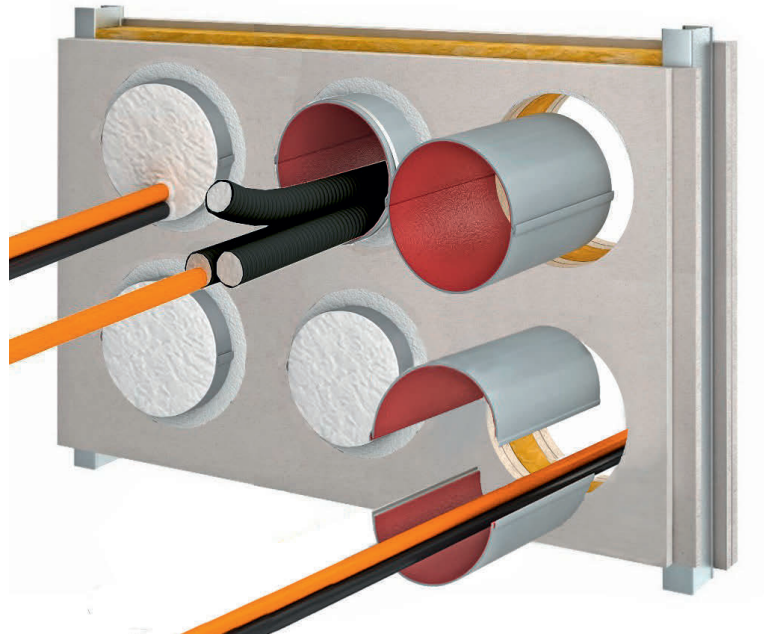
Must only be fitted and used in accordance installation instructions.

Retrospective installation

According to the approval, cables and conductors can be installed at any time without difficulty using basic tools.

Preliminary building work

No particular measures required



Fire ratings for wall and floor transits.

Fire ratings depending on structural elements, occupation and length of PYRO-SAFE CT

PYRO-SAFE CT	Length 150				Length 200				Length 300					
	Plasterboard/ solid wall		Floor		Plasterboard/ solid wall		Floor		Plasterboard/ solid wall		Floor			
Occupation/element thickness	≥ 100		≥ 125		≥ 100		≥ 125		≥ 100		≥ 150*		≥ 150	
Cable dia. ≤ 21 mm	EI 90	E 120	EI 60	E 90	EI 120	E 120	EI 60	E 90	EI 120	EI 120	E 120	EI 120	E 120	
Cable dia. > 21 mm – dia. ≤ 50 mm	EI 45	E 90	EI 45	E 90	-		EI 45	E 90	EI 90	EI 90	E 120	EI 60	E 120	
Cable dia. > 50 mm – dia. ≤ 80 mm	-		-		-		-		-	EI 90	E 120	EI 60	E 120	
Cable loom dia ≤ 107 mm with cable dia. ≤ 21 mm	EI 90	E 120	EI 60	E 90	EI 120	E 120	EI 60	E 90	EI 120	EI 120	E 120	EI 120	E 120	
Conduit bundle dia ≤ 107 mm with conduit dia. ≥ 16 mm - dia. ≤ 32 mm with/without cable dia. ≤ 21 mm	-		-		EI 120	E 120	-		EI 120	EI 120	E 120	EI 90	E 120	
PVC-U conduits ext. dia. 20 mm x s 1.5 mm to 32 mm x s 2.4 mm	-		-		-		-		EI 120	EI 120	E 120	-		

All dimensions in mm

* Applies to solid wall

The advantages for you

- Quick and clean to install
- No reveals required in plasterboard walls
- Easy retrofitting
- Can be arranged in groups
- Approved throughout Europe



Subject to errors, misprints and amendments. All details are in line with the state of the art and/or standards at time of printing (09/2013)
We would be pleased to inform you of the statutory and technical conditions and/or manufacturers' instructions for your individual case on request